

## Flowcoat SK UV (0.5mm)

A light slip resistant, high build epoxy and polyurethane resin based coating with excellent resistance to hydraulic fluids and Skydrol®.

Typically used as a durable, UV stable coloured floor coating in internal aviation environments.



### UV Stable:

The coating offers resistance against harsh Ultra Violet rays.



### Light Reflective:

High gloss providing excellent light reflectivity.



### Low Maintenance:

Seamless, hygienic finish, which requires low maintenance.



### Resistant:

Hard wearing, durable, chemical and abrasion resistant.

## Technical Profile

### FIRE RESISTANCE - AS/ISO 9239.1

CHF Value	- kW/m <sup>2</sup>
Smoke Value	4% (Mean)

### SLIP RESISTANCE\*

Method described in AS4586-2013	>P3 (Based on 60 Mesh White Aluminium Oxide Aggregate)
---------------------------------	--

### TEMPERATURE RESISTANCE

Tolerant up to 65°C

### WATER PERMEABILITY

Karsten Test	Nil (Impermeable)
--------------	-------------------

### SURFACE HARDNESS

Koenig Hardness Test	180secs
----------------------	---------

### BOND STRENGTH\*\*

ASTM D4541 (Pull-Off Test)	> 1.5MPa
----------------------------	----------

### ABRASION RESISTANCE

Taber Abrader BS8204: Part 2 Grade AR2	0.1g loss per 1000 cycles 1kg load using CS10 wheels
--	---

### UV LIGHT RESISTANCE

Excellent

### CHEMICAL RESISTANCE

Refer to Chemical Resistance Chart

SPEED OF CURE***	10 °C	20 °C	30 °C
Foot Traffic	48 h	24 h	18 h
Vehicular Traffic	96 h	72 h	48 h
Full Chemical Cure	12 d	7 d	6 d

\*The specific slip test rating (P0-P5 range) noted in this document is based on the system design, products listed, coverage rates and specific aggregate outlined in this document. This slip test rating can and will change if the standard specification details or installation methods are altered in any way. The specific slip rating (P0-P5 range) noted in this document is based on 96 Rubber slide testing on level non-inclined surfaces. Applicators should refer to methods outlined in AS4586-2013 and SA HB 198:2014.

\*\*Assume concrete or substrate is a minimum of 25 N/mm<sup>2</sup>.

\*\*\*These figures are typical properties achieved in laboratory tests at 20°C and at 50% Relative Humidity.



Terracotta



Serpentine



Bluebell



Light Grey Blue



Pastel Grey



Light Grey



Bridge Grey



Dark Grey



Straw



Mushroom

The applied colours may differ from the examples shown.  
For a full colour chart and samples, contact your local Flowcrete office.

## Coving

Coving can form an integral part of the flooring system. It creates a sealed finish between the floor and wall joint. Please refer to Flowtex F1 Coving Mortar for further information.

## Substrate Requirements

Concrete or screed substrate should be a minimum of 25 N/mm<sup>2</sup>, free from laitance, dust and other contamination. Substrate should be dry to 75% RH as per ASTM F2170 (AS1884:2012). Slab on ground concrete must have an effective damp proof membrane in place.

## Installation Service

The installation should be carried out by a qualified contractor with a documented quality assurance scheme. For details of our recommended contractors, contact your local Flowcrete office. Detailed application instructions are available upon request.

## Environmental Considerations

The finished system is assessed as non-hazardous to health and the environment. The long service life and seamless surface reduce the need for repairs and maintenance. Environmental and health considerations are controlled during manufacture of the products by Flowcrete staff.

## Aftercare, Cleaning & Maintenance

Clean regularly using a single or double headed rotary scrubber drier in conjunction with a mildly alkaline detergent. Please refer to Flowcrete's Cleaning & Maintenance Guide for further information.

## Warranty

Flowcrete products are guaranteed against defective materials and manufacture and are sold subject to our standard 'Warranty, Terms and Conditions of Sale', copies of which can be obtained on request. Warranty does not cover suitability, fit for purpose or any consequential or related damages. Please review warranty in detail before installing the products.

## Safety Precautions

Wear appropriate Personal Protective Equipment (PPE) including masks, gloves, eye protection and protective clothing during mixing and application. Ensure the working area is well ventilated and follow the appropriate Health and Safety guidelines applicable to the location where the application is undertaken.

## Important

This specification assumes a concrete compressive strength greater than 25 N/mm<sup>2</sup>, application and curing temperatures of 5–35°C, the presence of an effective damp proof membrane below substrate and concrete moisture content less than 75% RH. If moisture content is above 75% RH, please contact Flowcrete Australia.

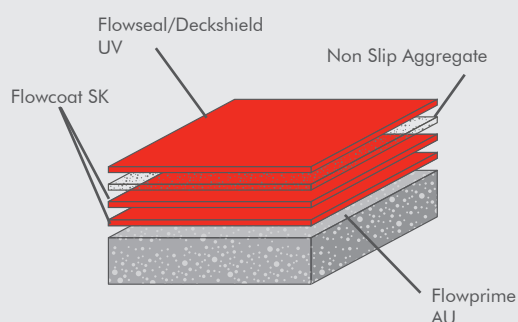
This specification must be read in conjunction with relevant product technical data sheets and the application of all materials is to be strictly in accordance with manufacturer's instructions.

## Model Specification

<b>System</b>	Flowcoat SK UV
<b>Finish</b>	Gloss
<b>Thickness</b>	0.5mm
<b>Manufacturer</b>	Tremco CPG Australia Pty Ltd
<b>Contact</b>	+ 61 7 3205 7115

Preparatory work and application in accordance with manufacturer's instructions.

## System Design



## Products Included In This System

<b>Layer 1</b>	Flowprime AU
<b>Layer 2</b>	Flowcoat SK
<b>Layer 3</b>	Flowcoat SK
	Slip Resistant Aggregate
<b>Layer 4</b>	Flowseal / Deckshield UV

## Distributor Details

<b>Distributor</b>	Altex Coatings Ltd
<b>Address</b>	91-111 Oropi Road Greerton
<b>Suburb</b>	Tauranga
<b>Country</b>	New Zealand
<b>Postcode</b>	3112
<b>Telephone</b>	+64 7 541 1221
<b>Email</b>	nzweb@flowcrete.com

## Outline for Installation

<b>Mechanically Prepare Substrate</b>	
<b>Apply Flowprime AU</b>	@ 0.2kg/m <sup>2</sup>
<b>Apply Flowcoat SK</b>	@ 0.2kg/m <sup>2</sup>
<b>Apply Flowcoat SK</b>	@ 0.2kg/m <sup>2</sup>
<b>Broadcast Non Slip Aggregate Onto The Cured Flowcoat SK</b> *Based on 60 Mesh White Aluminium Oxide	@ 0.01kg/m <sup>2</sup>
<b>Apply Flowseal/ Deckshield UV</b>	@ 0.15kg/m <sup>2</sup>

## Storage

<b>Time</b>	12 Months in Unopened Packs. If longer than 12 Months consult Flowcrete.
<b>Temperature</b>	Storage temperature between 5°C and 35°C.
<b>Protection</b>	Should be stored inside and protected from frost, weather, moisture, direct sunlight and contamination ingress.

## Material Set-Up

Before commencing work ensure that your material is set-up by separating all components (e.g. Base A, Hardener B, Filler C etc.) to ensure that all material is correct. Check product labels and ensure there are equal amounts of product.

## Site Set-Up

Before commencing work ensure that your site is set-up. Mark the floor according to the specification with masking tape or similar to clearly identify what area (m<sup>2</sup>) each unit will cover. If this is not achieved (greater or less consumption than the specified amount) immediately stop and contact Flowcrete.

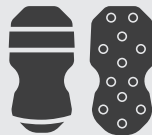
## Application Equipment

The use of correct application equipment is critical as incorrect application tools can result in poor finishing and incorrect material consumption. Always test the application equipment prior to commencing work.

The following equipment is recommended for this application.



10-12mm Nap Roller  
\*Do not use Microfibre



Spike Shoes



Slow Speed Drill with  
Helical Mixer Head



Squeegee

## Surface Preparation

Concrete should be finished by steel trowel. Surface preparation is to be completed by totally enclosed light shot blasting (please note this may leave track and blast lines which will not be covered) or diamond grinding to a minimum CSP2 prior to any coating application. For proper methods, refer to ICRI's Technical Guideline No. 03732. All cementitious laitance must be removed to expose a sound substrate and provide a dry, dust free, open textured surface. All hard to reach areas and areas around the perimeter must be prepared using hand held preparation equipment.

Any damaged areas must be repaired with Flowtex F1 mortar. Consult Flowcrete prior to using an alternative repair mortar. Any rough or uneven areas must be made smooth with Flowcoat SC (Universal Resin Base A, Universal Hardener B, Sand/Flour).

## Application Temperature

The recommended material and substrate temperature is 5 - 35°C, but no less than 5°C. The temperature of the substrate should exceed the "dew point" by 3°C during application and hardening.

Temperatures should not fall below 5°C in the 24hrs after application.

## Application / Pot Life

Ready-mixed product should be used within 20 minutes at a temperature of 20°C. At higher temperatures (or if left in bucket) the application time is shorter.

Decant mixed product into smaller quantities if applying small/detailed areas.

## Application of Flowprime AU.

The substrate must be surface dry before the application of Flowprime AU.

### 1. Mixing Flowprime AU

Stir Base A to re-disperse any settlement. Decant required amount of Base A into a clean container by weight using digital scales.

Add required amount of Hardener B to the decanted Base A container, and drain thoroughly. Mix with a slow speed drill and helical spinner head for 1 minute, taking care not to entrain air. Add between 2 - 7% Xylene (if required depending on conditions) and mix for a further 30 seconds.

### 2. Application

Immediately after mixing, apply the Flowprime AU by squeegee and/or roller.

## Application of Flowcoat SK

The substrate must be surface dry before the application of Flowcoat SK. Flowcoat SK must be applied within 24 hours at 20°C following the application of Flowprime AU (if applied).

### 1. Mixing

Pack components are pre-weighed for optimum performance. We recommend that you do not split or proportion packs, however, if required this must be completed by weight using digital scales.

Stir Base A to re-disperse any settlement. Add Pigment (if supplied separately) and mix until uniform.

Add Hardener B to the Base A container, and drain thoroughly. Mix with a slow speed drill and helical spinner head for 90 seconds, taking care not to entrain air. Add between 2 - 7% Xylene (if required depending on conditions) and mix for a further 30 seconds.

### 2. Application

Immediately after mixing, apply the Flowcoat SK by squeegee and/or roller. Allow to cure.

## Application 2nd Coat of Flowcoat SK

The previous coat must be surface dry before the application of Flowcoat SK. The 2nd coat of Flowcoat SK must be applied within 24 hours at 20°C following the application of 1st Coat of Flowcoat SK.

### 1. Mixing

Pack components are pre-weighed for optimum performance. We recommend that you do not split or proportion packs, however, if required this must be completed by weight using digital scales.

Stir Base A to re-disperse any settlement. Add Pigment (if supplied separately) and mix until uniform. Add Hardener B to the Base A container, and drain thoroughly. Mix with a slow speed drill and helical spinner head for 90 seconds, taking care not to entrain air. Add between 2 - 7% Xylene (if required depending on conditions) and mix for a further 30 seconds.

### 2. Application

Immediately after mixing, apply the Flowcoat SK by roller. Allow to cure.

## Application of Non Slip Aggregate

The previous coat must be surface dry before the application of 60 Mesh White Aluminium Oxide aggregate.

Decant required amount of aggregate into a clean container and broadcast evenly across the designated area e.g. 0.5kg will cover 50m<sup>2</sup>.

## Application of Flowseal/Deckshield UV

The previous coat must be surface dry before the application of Flowseal/Deckshield UV. Flowseal/Deckshield UV must be applied within 24 hours at 20°C following the application of Flowcoat SK.

### 1. Mixing

Pack components are pre-weighed for optimum performance. We recommend that you do not split or proportion packs, however, if required this must be completed by weight using digital scales.

Stir Base A to re-disperse any settlement. Add Pigment (if supplied separately) and mix until uniform. Add Hardener B to the Base A container, and drain thoroughly. Mix with a slow speed drill and helical spinner head for 90 seconds, taking care not to entrain air.

### 2. Application

Immediately after mixing, apply the Flowseal/Deckshield UV by roller. Allow to cure.

## Cleaning

Tools and equipment can be cleaned with MEK/Acetone/Xylene. Please refer to SDS when using solvents.

## Trafficking

Allow to cure for a minimum of 24 hours at temperatures no less than 20°C before foot traffic and 72 hours before vehicular traffic.

### Note

When printed or saved externally, this document is uncontrolled and therefore may not be the latest version. Any recommendation or suggestion relating to the use of the products made by Tremco CPG Australia Pty Ltd., whether in its technical literature, or in response to a specific enquiry, or otherwise, is based upon data believed to be reliable, however the products and information are intended for use by Customers having requisite skill and know-how in the industry and therefore it is for the Customer to satisfy itself of the suitability of the products for its own particular use and it shall be deemed that the Customer has done so at its sole discretion and risk.

## Additional Notes

1. Maximum overcoat time is 24 hours at 20°C.
2. The product has reached full chemical cure after 7 days at 20°C.
3. The applied colours may differ from the examples shown.
4. Light and vibrant colours may require additional coats to achieve desired results.
5. Flowcrete assumes no responsibility for the application of incorrect colour.
6. It is the applicators responsibility to verify accuracy of colour prior to application. Flowcrete does not bear any responsibility or accept claims for incorrect colour after application of material.
7. It is recommended that top coat colours match base coat colours to achieve desired results.
8. Do not cover or wash within the first 24 hours at 20°C of curing.
9. This system should be installed at 3°C above the dew point.
10. A low temperature/high humidity environment can cause blooming issues on the Flowcoat SK
11. Please ensure application temperature and RH limits are followed.
12. Wind or strong airflow may cause quick curing and drying of the system.
13. Ensure wind or strong airflow is eliminated during application, however adequate safety ventilation should still be followed.

14. Direct heat during application of the system can cause flash curing, potential delamination, pinholing and outgassing. Ensure you do not apply this system to substrates with temperatures exceeding 35°C.
15. The specific slip test rating (P0-P5 range) noted in this document is based on the system design, products listed, coverage rates and specific aggregate outlined in this document. This slip test rating can and will change if the standard specification details or installation methods are altered in any way. The specific slip rating (P0-P5 range) noted in this document is based on 96 Rubber slide testing on level non-inclined surfaces. Applicators should refer to methods outlined in AS4586-2013 and SA HB 198:2014