

Flowfresh SRQ (6mm)

A heavy duty, chemical resistant and hygienic hybrid resin flooring system with a decorative coloured quartz finish.

Typically used internal wet processing and food preparation areas.



Rapid Curing:

MMA additives speed up cure time, reducing construction schedules.



Thermal Resistant:

Tolerant of sustained temperatures up to 70°C.



Resistant:

Holds its own against impact, traffic and chemical attack.



Slip Resistant:

Provides slip resistance for traction underfoot.

Technical Profile

FIRE RESISTANCE - AS/ISO 9239.1

CHF Value > 11 kW/m²

Smoke Value < 4 kW/m²

SLIP RESISTANCE

Method described in AS4586-2013 P5 (Based on 0.6mm-1.0mm sized Quartz Sand Aggregate)

IMPACT RESISTANCE

EN ISO 6272 10Nm

TEMPERATURE RESISTANCE

Tolerant of sustained temperatures up to 70°C

WATER PERMEABILITY

Karsten Test Nil (impermeable)

CHEMICAL RESISTANCE

Contact Technical Department

ABRASION RESISTANCE

Taber Abrader 0.1g loss per 1000 cycles (1kg using CS17 wheels)

COMPRESSIVE STRENGTH

EN 13892-2 60 N/mm²

FLEXURAL STRENGTH

EN 13892-2 20 N/mm²

TENSILE STRENGTH

BS6319 15 N/mm²

BOND STRENGTH

ASTM D4541 (Pull-Off Test) > 1.5MPa

SPEED OF CURE* TOP COAT

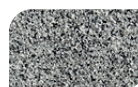
Walk On 1 hr

Full Traffic & Chemical Cure 2 - 3 hrs

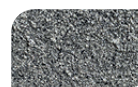
*These figures are typical properties achieved in laboratory tests at 20°C and at 50% Relative Humidity. Textured systems are recommended to meet slip resistance value requirements for wet conditions and/or surface contaminants (wet/dry). Please contact our Technical Advisers for further details.



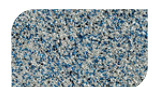
Light Grey



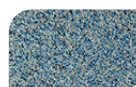
Mid Grey



Dark Grey



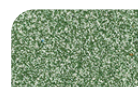
Light Blue



Bright Blue



Red



Green

The applied colours may differ from the examples shown. For a full colour chart and samples, contact your local Flowcrete office.

Coving

Coving can form an integral part of the flooring system. It creates a sealed finish between the floor and wall joint. Please refer to Flowtex F1 Coving Mortar for further information.

Substrate Requirements

Concrete or screed substrate should be a minimum of 25 N/mm², free from laitance, dust and other contamination. Substrate should be dry to 95% RH as per ASTM F2170 (AS1884:2012). Slab on ground concrete must have an effective damp proof membrane in place.

Installation Service

The installation should be carried out by a qualified contractor with a documented quality assurance scheme. For details of our recommended contractors, contact your local Flowcrete office. Detailed application instructions are available upon request.

Environmental Considerations

The finished system is assessed as non-hazardous to health and the environment. The long service life and seamless surface reduce the need for repairs and maintenance. Environmental and health considerations are controlled during manufacture of the products by Flowcrete staff.

Aftercare, Cleaning & Maintenance

Clean regularly using a single or double headed rotary scrubber drier in conjunction with a mildly alkaline detergent. Please refer to Flowcrete's Cleaning & Maintenance Guide for further information.

Warranty

Flowcrete products are guaranteed against defective materials and manufacture and are sold subject to our standard 'Warranty, Terms and Conditions of Sale', copies of which can be obtained on request. Warranty does not cover suitability, fit for purpose or any consequential or related damages. Please review warranty in detail before installing the products.

Safety Precautions

Wear appropriate Personal Protective Equipment (PPE) including masks, gloves, eye protection and protective clothing during mixing and application. Ensure the working area is well ventilated and follow the appropriate Health and Safety guidelines applicable to the location where the application is undertaken.

Important

This specification assumes a concrete compressive strength greater than 25 N/mm², application and curing temperatures of 5–35°C, the presence of an effective damp proof membrane below substrate and concrete moisture content less than 95% RH. If moisture content is above 95% RH, please contact Flowcrete Australia.

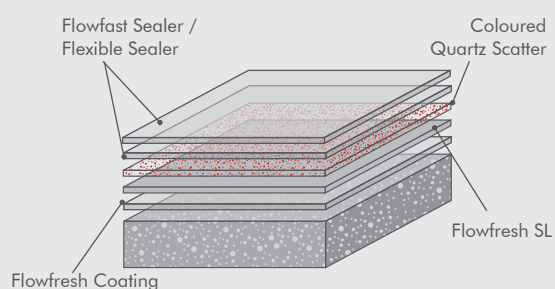
This specification must be read in conjunction with relevant product technical data sheets and the application of all materials is to be strictly in accordance with manufacturer's instructions..

Model Specification

| | |
|---------------------|------------------------------|
| System | Flowfresh SRQ |
| Finish | Satin |
| Thickness | 6mm |
| Manufacturer | Tremco CPG Australia Pty Ltd |
| Contact | + 61 7 3205 7115 |

Preparatory work and application in accordance with manufacturer's instructions.

System Design



Products Included In This System

| | |
|----------------|-----------------------------------|
| Layer 1 | Flowfresh Coating |
| Layer 2 | Flowfresh SL |
| | Colour Quartz Scatter |
| Layer 3 | Flowfast Sealer / Flexible Sealer |
| Layer 4 | Flowfast Sealer / Flexible Sealer |

Distributor Details

| | |
|--------------------|----------------------------|
| Distributor | Altex Coatings Ltd |
| Address | 91-111 Oropi Road Greerton |
| Suburb | Tauranga |
| Country | New Zealand |
| Postcode | 3112 |
| Telephone | +64 7 541 1221 |
| Email | nzweb@flowcrete.com |

Outline for Installation

| | |
|--|----------------------------|
| Mechanically Prepare Substrate | |
| Apply Flowfresh Coating | @ 0.2-0.4kg/m ² |
| *Primer only if required for porous substrates. | |
| Apply Flowfresh SL | @ 7.2kg/m ² |
| Fully Broadcast Coloured Quartz | @ 3kg/m ² |
| Apply Flowfast Sealer / Flexible Sealer | @ 0.4kg/m ² |
| Apply Flowfast Sealer / Flexible Sealer | @ 0.25kg/m ² |

Storage

| | |
|--------------------|---|
| Time | 12 Months in Unopened Packs. If longer than 12 Months consult Flowcrete. |
| Temperature | Storage temperature between 5°C and 35°C. |
| Protection | Should be stored inside and protected from frost, weather, moisture, direct sunlight and contamination ingress. |

Material Set-Up

Before commencing work ensure that your material is set-up by separating all components (e.g. Base A, Hardener B, Filler C etc.) to ensure that all material is correct. Check product labels and ensure there are equal amounts of product.

Site Set-Up

Before commencing work ensure that your site is set-up. Mark the floor according to the specification with masking tape or similar to clearly identify what area (m²) each unit will cover. If this is not achieved (greater or less consumption than the specified amount) immediately stop and contact Flowcrete.

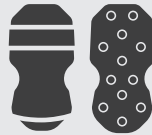
Application Equipment

The use of correct application equipment is critical as incorrect application tools can result in poor finishing and incorrect material consumption. Always test the application equipment prior to commencing work.

The following equipment is recommended for this application.



10-12mm Nap Roller
*Do not use Microfibre



Spike Shoes



Slow Speed Drill with
Helical Mixer Head



Squeegee



Pin Rake



Spike Roller



Steel Trowel

Surface Preparation

Concrete should be finished by steel trowel. Surface preparation is to be completed by totally enclosed light shot blasting (please note this may leave track and blast lines which will not be covered) or diamond grinding to a minimum CSP4 prior to any coating application. For proper methods, refer to ICRI's Technical Guideline No. 03732. All cementitious laitance must be removed to expose a sound substrate and provide a dry, dust free, open textured surface. All hard to reach areas and areas around the perimeter must be prepared using hand held preparation equipment.

Any damaged areas must be repaired with Flowtex F1 mortar. Consult Flowcrete prior to using an alternative repair mortar. Any rough or uneven areas must be made smooth with Flowcoat SC (Universal Resin Base A, Universal Hardener B, Sand/Flour).

Application Temperature

The recommended material and substrate temperature is 5 - 35°C, but no less than 10°C. The temperature of the substrate should exceed the "dew point" by 3°C during application and hardening.

Temperatures should not fall below 5°C in the 24hrs after application.

Application / Pot Life

Base Coat: Ready-mixed product should be used within 20 minutes at a temperature of 20°C.

Top Coat: Ready-mixed product should be used within 10 minutes at a temperature of 20°C.

At higher temperatures (or if left in bucket) the application time is shorter. Decant mixed product into smaller quantities if applying small/detailed areas.

Application of Flowfresh Coating

*For porous substrates only.

The substrate must be surface dry before the application of Flowfresh Coating.

1. Mixing Flowfresh Coating

Pack components are pre-weighed for optimum performance. We recommend that you do not split or proportion packs.

Stir Base A to re-disperse any settlement and decant into a clean container. Add Filler C to Base A and mix until uniform. Add Hardener B to the Base A, and drain thoroughly. Mix with a slow speed drill and helical spinner head for 45 seconds, taking care not to entrain air. Add between 2 - 7% Xylene (if required depending on conditions) and mix for a further 30 seconds.

2. Application

Immediately after mixing, apply the Flowfresh Coating by squeegee and/or roller. Allow to cure for a minimum of 8 hours at 20°C.

Application of Flowfresh SL

The substrate must be surface dry before the application of Flowfresh SL.

Flowfresh SL must be applied within 24 hours @ 20°C following the application of Flowfresh Coating.

1. Mixing

Pack components are pre-weighed for optimum performance. We recommend that you do not split or proportion packs, however, if supplied in bulk packaging this must be completed by weight using digital scales.

1.A Mixing Flowfresh SL (Bulk Packaging)

Stir Base A (17.292kg) to re-disperse any settlement. Add Pigment (1.2kg) and mix until uniform. Transfer to a Portamix Mega Hippo mixing container. Add Hardener B (18kg) to the mixing container, and drain thoroughly. Mix with a slow speed drill and helical spinner head for 45 seconds, taking care not to entrain air. Add Filler C (6 x 11.938kg) to mixing container and mix until uniform.

If smaller mixes are required, decant Part A and Hardener B using digital scales to the required weight.

1.B Mixing Flowfresh SL (Prepacked)

Stir Base A (2.882kg) to re-disperse any settlement. Transfer to a clean container. Add Pigment (0.2kg) and mix until uniform. Add Hardener B (3kg) to the mixing container, and drain thoroughly. Mix with a slow speed drill and helical spinner head for 45 seconds, taking care not to entrain air. Add Filler C (11.938kg) to mixing container and add additional 2kg of 16/30 Silica Sand (1mm Nominal) to mixing container and mix until uniform.

2. Application

Immediately after mixing, apply the Flowfresh SL by pin rake to the required thickness and finish with a steel trowel. Immediately after application spike roll the surface to assist with levelling the material and to release any entrapped air. Late spike rolling of the material can result in surface defects. Within 10 - 15 minutes (at 20°C) fully broadcast the surface to refusal with the coloured quartz aggregate.

Application of Flowfast Sealer / Flexible Sealer

The substrate must be surface dry before the application of Flowfast Sealer / Flexible Sealer. Flowfast Sealer / Flexible Sealer should be applied after the Flowfresh SL has fully cured.

1. Mixing

Thoroughly mix the resin with a slow speed drill and helical spinner and mix for 30 seconds. Decant required amount of materials by weight using digital scales.

Then add pigment (if supplied separately) and mix for 30 seconds. Then add required amount of Flowfast catalyst and mix for a further 30 seconds.

2. Application

Immediately after mixing, apply the Flowfast Sealer / Flexible Sealer by roller ensuring an even consistent film is achieved. Allow to cure.

Application of 2nd Coat of Flowfast Sealer / Flexible Sealer

The substrate must be surface dry before the application of Flowfast Sealer / Flexible Sealer. Flowfast Sealer / Flexible Sealer should be applied after the 1st coat of Flowfast Sealer / Flexible Sealer has cured for a minimum of 1 hour.

1. Mixing

Thoroughly mix the resin with a slow speed drill and helical spinner and mix for 30 seconds. Decant required amount of materials by weight using digital scales.

Then add pigment (if supplied separately) and mix for 30 seconds. Then add required amount of Flowfast catalyst and mix for a further 30 seconds.

2. Application

Immediately after mixing, apply the Flowfast Sealer / Flexible Sealer by roller ensuring an even consistent film is achieved. Allow to cure.

NOTE: To achieve the best aesthetic results, we recommend there is 1 operative on spike shoes rolling the coating in 1 uninterrupted motion the full width of the area being coated or the full width from joint to joint.

Cleaning

Tools and equipment can be cleaned with MEK/Acetone/Xylene. Please refer to SDS when using solvents.

Trafficking

Allow to cure for a minimum of 2 hours at temperatures no less than 20°C before foot traffic and 2 hours before vehicular traffic.

Note

When printed or saved externally, this document is uncontrolled and therefore may not be the latest version. Any recommendation or suggestion relating to the use of the products made by Tremco CPG Australia Pty Ltd., whether in its technical literature, or in response to a specific enquiry, or otherwise, is based upon data believed to be reliable, however the products and information are intended for use by Customers having requisite skill and know-how in the industry and therefore it is for the Customer to satisfy itself of the suitability of the products for its own particular use and it shall be deemed that the Customer has done so at its sole discretion and risk.

Additional Notes

1. Maximum overcoat time is 24 hours at 20°C if primer is required.
2. The product has reached full cure after 2-3 hours at 20°C.
3. The applied colours may differ from the examples shown.
4. Flowcrete assumes no responsibility for the application of incorrect colour.
5. It is the applicators responsibility to verify accuracy of colour prior to application. Flowcrete does not bear any responsibility or accept claims for incorrect colour after application of material.
6. This system is not UV stable and will discolour unless otherwise stated.
7. Do not cover or wash within the first 2 hours of curing at 20°C.
8. This system should be installed at 3°C above the dew point.
9. Please ensure application temperature and RH limits are followed.
10. Wind or strong airflow may cause quick curing and drying of the system.
11. Ensure wind or strong airflow is eliminated during application, however adequate safety ventilation should still be followed.
12. Direct heat during application of the system can cause flash curing and potential delamination. Ensure you do not apply this system to substrates with temperatures exceeding 35°C.
13. The specific slip test rating (P0-P5 range) noted in this document is based on the system design, products listed, coverage rates and specific aggregate outlined in this document. This slip test rating can and will change if the standard specification details or installation methods are altered in any way. The specific slip rating (P0-P5 range) noted in this document is based on 96 Rubber slide testing on level non-inclined surfaces. Applicators should refer to methods outlined in AS4586-2013 and SA HB 198:2014