



## COMMERCIAL FLOORING

- ▶ Combine colour, performance and design to deliver a durable floor finish in commercial venues and retail environments.

# Commercial Flooring Technical Profile

---



Flowcrete's Commercial Flooring range has been developed to deliver the ultimate in aesthetic appeal, without compromising on performance.

Available in a range of attractive finishes, from luxurious terrazzo and stone look systems to unique metallic surfaces, our seamless resin flooring solutions provide an appealing platform underfoot.

Durable formulations take heavy footfall and exposure to detergents and corrosive agents in their stride, ideally suited to busy public venues that might be subject to spillages and daily cleaning regimes.

Added benefits of impressive slip resistance, noise reduction and versatility result in a range of flooring solutions perfect for a variety of commercial environments.

---

## Application Suitability



Retail Boutiques



Shopping Centres



Stadiums & Arenas



Airports & Terminals



Educational Facilities



Automotive Showrooms



# Mondéco EP (8 mm)

A low odour, seamless resin-based decorative terrazzo floor finish which features marble aggregates.

Typically used in high-end commercial developments, airports and shopping centres.



### Flexible Design:

Offers extensive design potential to deliver the wow-factor underfoot.



### Long Life Span:

Highly durable finish provides a long life cycle solution.



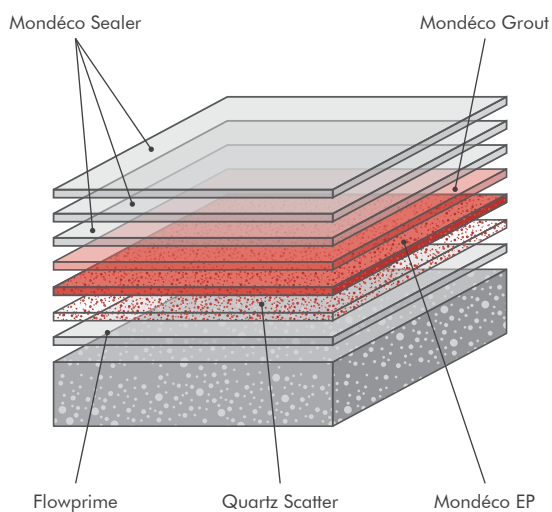
### Chemical Resistant:

Resistant to a wide range of chemicals and cleaning solutions.



### Low Odour:

Provides a low odour resin flooring solution.



## Technical Profile

| FIRE RESISTANCE                               |   |
|---|---|
| AS/ISO 9239.1                                 | CHF Value: $\geq 9.5 \text{ kW/m}^2$<br>Smoke Value: 266 % (Mean) |
| SLIP RESISTANCE                               |   |
| Method described in AS4586-2013               | Dry & Wet Rating is dependent on specification                    |
| TEMPERATURE RESISTANCE                        |   |
| Tolerant of sustained temperatures up to 60°C |   |
| WATER PERMEABILITY                            |   |
| Karsten Test                                  | Nil (Impermeable)   |
| CHEMICAL RESISTANCE                           |   |
| Contact Technical Department                  |   |
| ABRASION RESISTANCE                           |   |
| BS 8204-2                                     | Grade AR2   |
| COMPRESSIVE STRENGTH                          |   |
| EN 13892-2                                    | $> 55 \text{ N/mm}^2$   |
| FLEXURAL STRENGTH                             |   |
| EN 13892-2                                    | $> 20 \text{ N/mm}^2$   |
| TENSILE STRENGTH                              |   |
| BS 6319                                       | $> 10 \text{ N/mm}^2$   |
| BOND STRENGTH                                 |   |
| ASTM D4541 (Pull-Off Test)                    | $> 1.5 \text{ MPa}^{**}$  |

| SPEED OF CURE***   | 10°C    | 20°C   | 30°C   |
|--------------------|---------|--------|--------|
| Light Traffic      | 24 hrs  | 20 hrs | 16 hrs |
| Full Traffic       | 72 hrs  | 48 hrs | 36 hrs |
| Full Chemical Cure | 12 days | 7 days | 6 days |

These figures are typical properties achieved in laboratory tests at 20°C and at 50% Relative Humidity.

\*The slipperiness of flooring materials can change significantly, due to the installation process, after short periods of use, due to inappropriate maintenance, longer-term wear and/or surface contaminants (wet or dry). Textured systems are recommended to meet slip resistance value requirements for wet conditions and/or surface contaminants (wet or dry) — please contact our Technical Advisors for further details. \*\*Assumes concrete compressive strength is greater than 25N/mm<sup>2</sup> \*\*\*For full speed of cure details, contact our Technical Advisors.



# Mondéco Rapide (8 mm)

An innovative, rapid curing, seamless, resin-based decorative terrazzo floor finish which features marble aggregates.

Typically used in high-end commercial developments, airports and shopping centres.



### Flexible Design:

Offers extensive design potential to deliver the wow-factor underfoot.



### Rapid Installation:

Quick curing properties reduce downtime during installation.



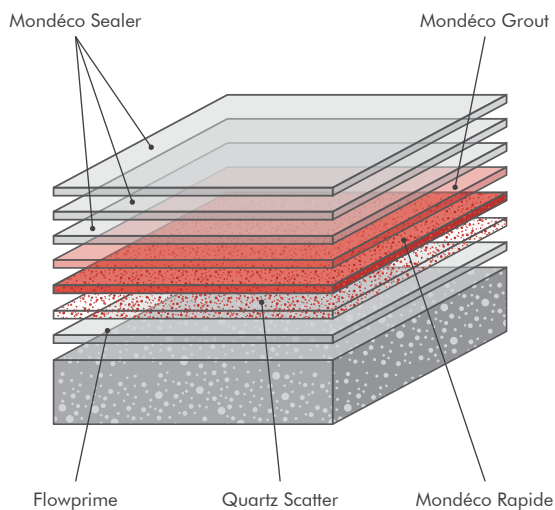
### Versatile:

Can be overlaid onto tiles making it ideal for refurbishments.



### Aesthetically Attractive:

Features local marble chip aggregates that provide a luxury finish.



## Technical Profile

| FIRE RESISTANCE                               |  |
|---|--|
| AS/ISO 9239.1                                 | CHF Value: 5.7 kW/m <sup>2</sup><br>Smoke Value: <4 % (Mean) |
| SLIP RESISTANCE                               |  |
| Method described in AS4586-2013               | Dry & Wet Rating is dependent on specification               |
| TEMPERATURE RESISTANCE                        |  |
| Tolerant of sustained temperatures up to 60°C |  |
| WATER PERMEABILITY                            |  |
| Karsten Test                                  | Nil (Impermeable)  |
| CHEMICAL RESISTANCE                           |  |
| Contact Technical Department                  |  |
| IMPACT STRENGTH                               |  |
| ISO 6272-1                                    | 10 Nm  |
| WEAR RESISTANCE                               |  |
| EN 13892-4                                    | Max. wear depth <5 μm  |
| BOND STRENGTH                                 |  |
| ASTM D4541 (Pull-Off Test)                    | >1.5 MPa**   |

| SPEED OF CURE***   |         |
|--------------------|---------|
| Light Traffic      | 1 hr    |
| Full Traffic       | 2-3 hrs |
| Full Chemical Cure | 2-3 hrs |

These figures are typical properties achieved in laboratory tests at 20°C and at 50% Relative Humidity.

\*The slipperiness of flooring materials can change significantly, due to the installation process, after short periods of use, due to inappropriate maintenance, longer-term wear and/or surface contaminants (wet or dry). Textured systems are recommended to meet slip resistance value requirements for wet conditions and/or surface contaminants (wet or dry) — please contact our Technical Advisors for further details. \*\*Assumes concrete compressive strength is greater than 25N/mm<sup>2</sup> \*\*\*For full speed of cure details, contact our Technical Advisors.

Aussie Outback



# Flowshield Stone (3–4 mm)

A highly decorative, UV, wear and chemical resistant resin-based flooring system featuring a decorative stone look blend.

Typically used in areas with heavy foot traffic including stadiums, arenas, malls and airports.



### Decorative:

Featuring decorative coloured stone look blends within the resin matrix.



### Easy to Clean:

Seamless and hygienic finish that is easy to clean and maintain.



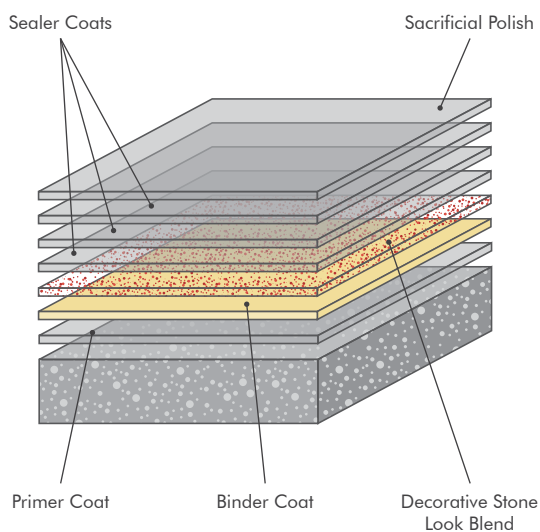
### Chemical Resistant:

Provides resistance against a range of chemicals.



### Durable:

Hard wearing and abrasion resistant against heavy foot and trolley traffic.



## Technical Profile

| FIRE RESISTANCE                               |   |
|---|---|
| EN 13505-1                                    | B <sub>FL</sub> - s1                              |
| SLIP RESISTANCE                               |   |
| Method described in AS4586-2013               | Dry & Wet Rating is dependent on specification    |
| TEMPERATURE RESISTANCE                        |   |
| Tolerant of sustained temperatures up to 60°C |   |
| WATER PERMEABILITY                            |   |
| Karsten Test                                  | Nil (Impermeable)                                 |
| CHEMICAL RESISTANCE                           |   |
| Contact Technical Department                  |   |
| ABRASION RESISTANCE                           |   |
| Taber Abrader BS8204:Part 2:2002              | Class AR2 - Medium duty industrial and commercial |
| IMPACT RESISTANCE                             |   |
| ISO 6272                                      | 1 kg weight > 1.8 m<br>2 kg weight > 1.5 m        |
| FLEXURAL STRENGTH                             |   |
| BS 6319                                       | 15 N/mm <sup>2</sup>                              |
| TENSILE STRENGTH                              |   |
| BS 6319                                       | 10 N/mm <sup>2</sup>                              |
| BOND STRENGTH                                 |   |
| ASTM D4541 (Pull-Off Test)                    | > 1.5 MPa**                                       |

| SPEED OF CURE***   | 10°C    | 20°C   | 30°C   |
|--------------------|---------|--------|--------|
| Light Traffic      | 36 hrs  | 24 hrs | 16 hrs |
| Full Traffic       | 48 hrs  | 36 hrs | 24 hrs |
| Full Chemical Cure | 12 days | 7 days | 6 days |

These figures are typical properties achieved in laboratory tests at 20°C and at 50% Relative Humidity.

\*The slipperiness of flooring materials can change significantly, due to the installation process, after short periods of use, due to inappropriate maintenance, longer-term wear and/or surface contaminants (wet or dry). Textured systems are recommended to meet slip resistance value requirements for wet conditions and/or surface contaminants (wet or dry) — please contact our Technical Advisors for further details. \*\*Assumes concrete compressive strength is greater than 25N/mm<sup>2</sup> \*\*\*For full speed of cure details, contact our Technical Advisors.





# Metallic Expressions (1.5–2 mm)

A highly decorative, hard wearing, advanced floor finish that provides a unique metallic finish that creates impact underfoot.

Typically used in retail stores, modern boutiques and hospitality venues.



### Attractive:

Offers a decorative, metallic and multi-dimensional finish.



### Bespoke Design:

Provides clients with diverse design potential.



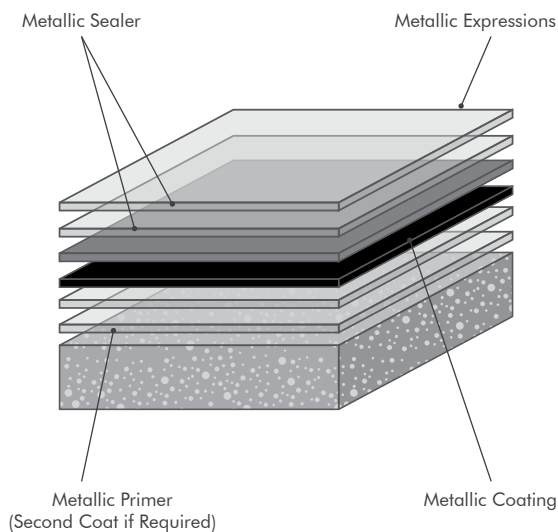
### Easy to Clean:

Delivers a hygienic smooth surface that is easy to clean and maintain.



### Durable:

Provides a durable and wear resistant platform underfoot.



## Technical Profile

| FIRE RESISTANCE                               |   |
|---|---|
| EN 13505-1                                    | B <sub>FL</sub> - s1                                    |
| SLIP RESISTANCE                               |   |
| Method described in AS4586-2013               | Dry & Wet Rating is dependent on specification          |
| TEMPERATURE RESISTANCE                        |   |
| Tolerant of sustained temperatures up to 60°C |   |
| WATER PERMEABILITY                            |   |
| Karsten Test                                  | Nil (Impermeable)                                       |
| CHEMICAL RESISTANCE                           |   |
| Contact Technical Department                  |   |
| ABRASION RESISTANCE                           |   |
| Taber Abrader                                 | 50mg loss per 1000 cycles (1 kg load using CS17 wheels) |
| BOND STRENGTH                                 |   |
| ASTM D4541 (Pull-Off Test)                    | > 1.5 MPa**   |
| SURFACE HARDNESS                              |   |
| Koenig Hardness Test                          | 180 secs.   |

| SPEED OF CURE***   | 20°C   | 35°C   |
|--------------------|--------|--------|
| Light Traffic      | 19 hrs | 15 hrs |
| Full Traffic       | 24 hrs | 20 hrs |
| Full Chemical Cure | 7 days | 6 days |

These figures are typical properties achieved in laboratory tests at 20°C and at 50% Relative Humidity.

\*The slipperiness of flooring materials can change significantly, due to the installation process, after short periods of use, due to inappropriate maintenance, longer-term wear and/or surface contaminants (wet or dry). Textured systems are recommended to meet slip resistance value requirements for wet conditions and/or surface contaminants (wet or dry) — please contact our Technical Advisors for further details. \*\*Assumes concrete compressive strength is greater than 25N/mm<sup>2</sup> \*\*\* Low relative humidity and good ventilation are pre-requisites to achieving the above drying times. For full speed of cure details, contact our Technical Advisors.



# Flowcoat SRQ (2 mm)

A decorative epoxy resin-based flooring system featuring coloured quartz granules that provides a non-slip platform underfoot.

Typically used for internal environments which require a decorative non-slip finish.



### Decorative:

Featuring decorative coloured quartz aggregates in a wide range of colours.



### Slip Resistant:

Textured aggregates provide non slip traction underfoot.



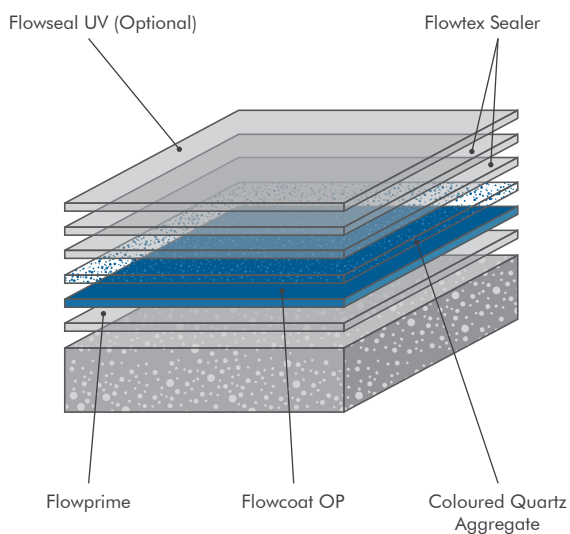
### Durable:

Hard wearing, durable and abrasion resistant.



### Aesthetic:

Decorative floor suited to both commercial and industrial facilities.



## Technical Profile

| FIRE RESISTANCE                 |  |
|---------------------------------|--|
| EN 13505-1                      | B <sub>FL</sub> - s1                           |
| SLIP RESISTANCE                 |  |
| Method described in AS4586-2013 | Dry & Wet Rating is dependent on specification |
| TEMPERATURE RESISTANCE          |  |
| Tolerant up to 60°C             |  |
| WATER PERMEABILITY              |  |
| Karsten Test                    | Nil (Impermeable)                              |
| CHEMICAL RESISTANCE             |  |
| Contact Technical Department    |  |
| FLEXURAL STRENGTH               |  |
| EN 13892-2                      | 15 N/mm <sup>2</sup>                           |
| TENSILE STRENGTH                |  |
| BS 6319                         | 10 N/mm <sup>2</sup>                           |
| IMPACT RESISTANCE               |  |
| ISO 6272                        | 1 kg weight > 1.8 m<br>2 kg weight > 1.5 m     |
| BOND STRENGTH                   |  |
| ASTM D4541 (Pull-Off Test)      | > 1.5 MPa**                                    |
| SURFACE HARDNESS                |  |
| Koenig Hardness Test            | 180 secs.                                      |

| SPEED OF CURE***   | 10°C    | 20°C   | 30°C   |
|--------------------|---------|--------|--------|
| Light Traffic      | 36 hrs  | 24 hrs | 18 hrs |
| Full Traffic       | 72 hrs  | 48 hrs | 36 hrs |
| Full Chemical Cure | 12 days | 7 days | 6 days |

These figures are typical properties achieved in laboratory tests at 20°C and at 50% Relative Humidity.

\*The slipperiness of flooring materials can change significantly, due to the installation process, after short periods of use, due to inappropriate maintenance, longer-term wear and/or surface contaminants (wet or dry). Textured systems are recommended to meet slip resistance value requirements for wet conditions and/or surface contaminants (wet or dry) — please contact our Technical Advisors for further details. \*\*Assumes concrete compressive strength is greater than 25N/mm<sup>2</sup> \*\*\* Low relative humidity and good ventilation are pre-requisites to achieving the above drying times. For full speed of cure details, contact our Technical Advisors.

# Rustik + UV (6 mm)

A stone carpet system that uses colourful stone aggregates binded with a clear resin to provide a natural looking interior floor finish.

Suitable for car showrooms, retail stores, reception halls and commercial spaces.



### Attractive:

A natural looking floor finish that is available in a range of colours.



### UV Stable:

100% UV light stable and suitable for outdoor use.



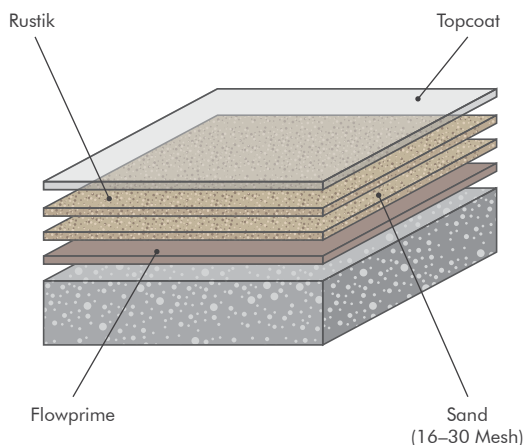
### Hard Wearing:

Hard wearing & abrasion resistant, suitable for regular foot traffic.



### Versatile:

Quick to install and can be applied to most substrates.



## Technical Profile

| SLIP RESISTANCE*                              |  |
|---|--|
| Method described in AS4586-2013               | Dry & Wet Rating is dependent on specification     |
| THERMAL RESISTANCE                            |  |
| Tolerant of sustained temperatures up to 60°C |  |
| ABRASION RESISTANCE                           |  |
| Taber Abrader BS8204:Part 2:2002              | Class AR2<br>Medium duty industrial and commercial |
| COMPRESSIVE STRENGTH                          |  |
| BS 6319                                       | >30 N/mm <sup>2</sup>                              |
| FLEXURAL STRENGTH                             |  |
| BS 6319                                       | 10 N/mm <sup>2</sup>                               |
| BOND STRENGTH                                 |  |
| ASTM D4541 (Pull-Off Test)                    | >1.5 MPa**   |
| CHEMICAL RESISTANCE                           |  |
| Contact Technical Department                  |  |
| TOXICITY                                      |  |
| Taint free to sensitive foodstuffs.           |  |

| SPEED OF CURE**    | 10°C    | 20°C   | 30°C   |
|--------------------|---------|--------|--------|
| Light Traffic      | 36 hrs  | 24 hrs | 16 hrs |
| Full Traffic       | 72 hrs  | 48 hrs | 36 hrs |
| Full Chemical Cure | 12 days | 7 days | 6 days |

These figures are typical properties achieved in laboratory tests at 20°C and at 50% Relative Humidity.

\*The slipperiness of flooring materials can change significantly, due to the installation process, after short periods of use, due to inappropriate maintenance, longer-term wear and/or surface contaminants (wet or dry). Textured systems are recommended to meet slip resistance value requirements for wet conditions and/or surface contaminants (wet or dry) — please contact our Technical Advisors for further details. \*\*Assumes concrete compressive strength is greater than 25N/mm<sup>2</sup> \*\*\*Low relative humidity and good ventilation are pre-requisites to achieving the above drying times. For full speed of cure details, contact our Technical Advisors.

\*\* Cure times at temperatures between 0-30°C can be achieved by altering the quantity of catalyst used. For applications falling outside of this temperature range, please contact your local Flowcrete Technical Department.

# Flowcoat Terrosso (1.5–3 mm)

Highly decorative, epoxy resin-based flooring systems featuring decorative flake blends and optional light non-slip aggregates for safety underfoot.

Available as a gloss or satin coating with a smooth or light non-slip finish.



## Decorative:

Featuring decorative acrylic flake blends within the resin matrix.



## Easy to Clean:

Seamless and hygienic finish is easy to clean and maintain.



## Non Slip Available:

Available in smooth or light non-slip gloss or satin finish.



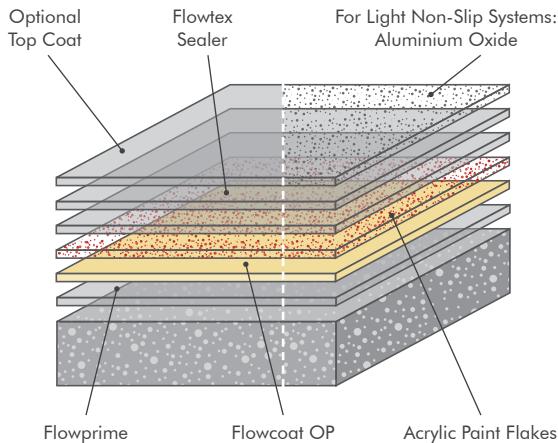
## Durable:

Hard wearing, durable and abrasion resistant.



## Chemical Resistant:

Provides resistance against a range of chemicals.



## Technical Profile

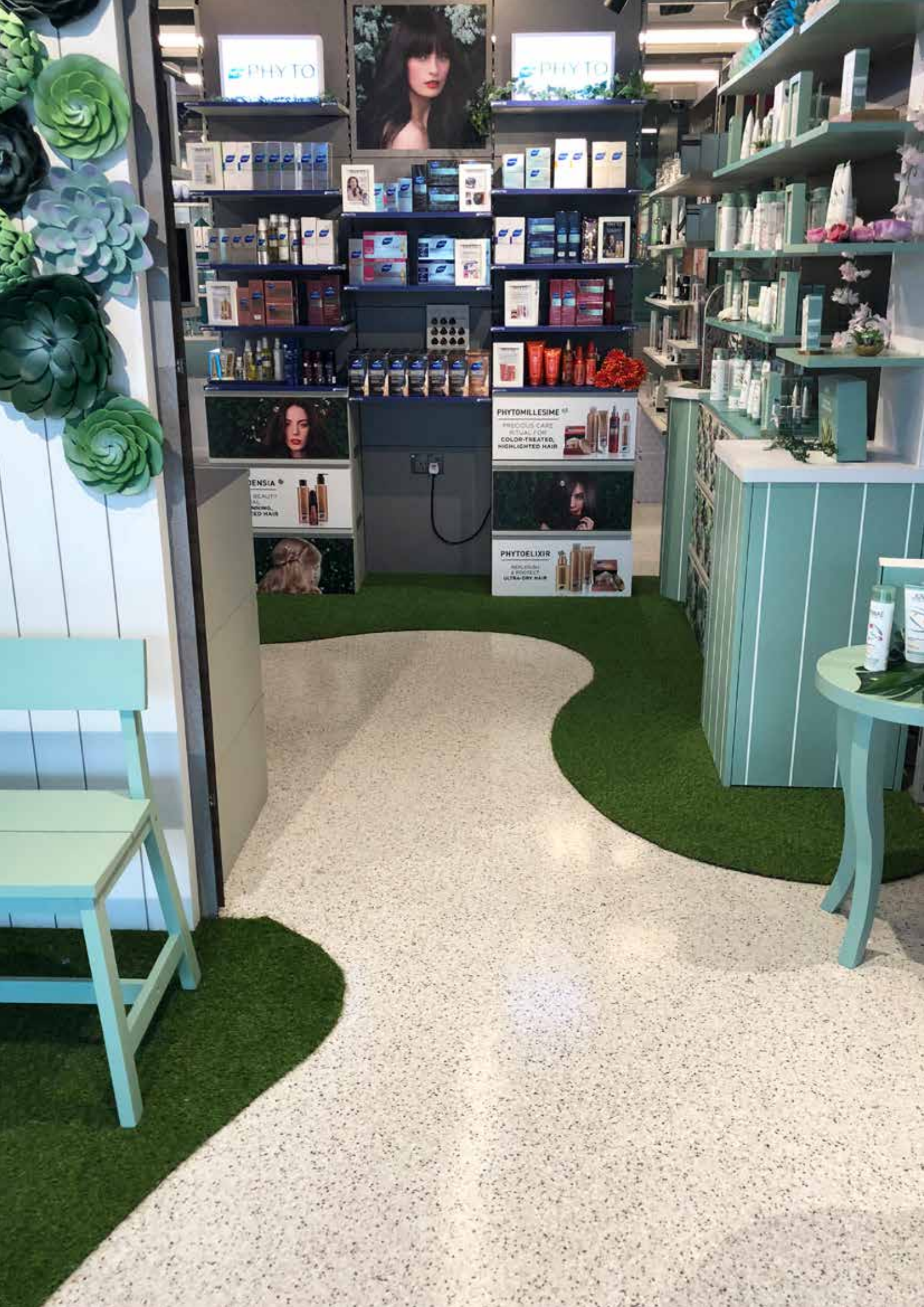
| FIRE RESISTANCE                               |  |
|---|--|
| EN 13505-1                                    | B <sub>f1-s1</sub>                                 |
| SLIP RESISTANCE*                              |  |
| Method described in AS4586-2013               | Dry & Wet Rating is dependent on specification     |
| THERMAL RESISTANCE                            |  |
| Tolerant of sustained temperatures up to 60°C |  |
| WATER PERMEABILITY                            |  |
| Karsten Test                                  | Nil (Impermeable)                                  |
| ABRASION RESISTANCE                           |  |
| Taber Abrader BS8204:Part 2:2002              | Class AR2<br>Medium duty industrial and commercial |
| IMPACT RESISTANCE                             |  |
| ISO 6272                                      | 1 kg weight > 1.8 m<br>2 kg weight > 1.5 m         |
| FLEXURAL STRENGTH                             |  |
| BS 6319                                       | 15 N/mm <sup>2</sup>                               |
| TENSILE STRENGTH                              |  |
| BS 6319                                       | 10 N/mm <sup>2</sup>                               |
| BOND STRENGTH                                 |  |
| ASTM D4541 (Pull-Off Test)                    | > 1.5 MPa**  |
| CHEMICAL RESISTANCE                           |  |
| Contact Technical Department                  |  |

| SPEED OF CURE**    | 10°C    | 20°C   | 30°C   |
|--------------------|---------|--------|--------|
| Light Traffic      | 36 hrs  | 24 hrs | 16 hrs |
| Full Traffic       | 72 hrs  | 48 hrs | 36 hrs |
| Full Chemical Cure | 12 days | 7 days | 6 days |

These figures are typical properties achieved in laboratory tests at 20°C and at 50% Relative Humidity.

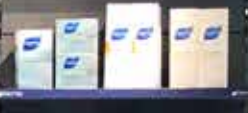
\*The slipperiness of flooring materials can change significantly, due to the installation process, after short periods of use, due to inappropriate maintenance, longer-term wear and/or surface contaminants (wet or dry). Textured systems are recommended to meet slip resistance value requirements for wet conditions and/or surface contaminants (wet or dry) — please contact our Technical Advisors for further details. \*\*Assumes concrete compressive strength is greater than 25N/mm<sup>2</sup> \*\*\*Low relative humidity and good ventilation are pre-requisites to achieving the above drying times. For full speed of cure details, contact our Technical Advisors.

\*\* Cure times at temperatures between 0-30°C can be achieved by altering the quantity of catalyst used. For applications falling outside of this temperature range, please contact your local Flowcrete Technical Department.



PHYTO

PHYTO



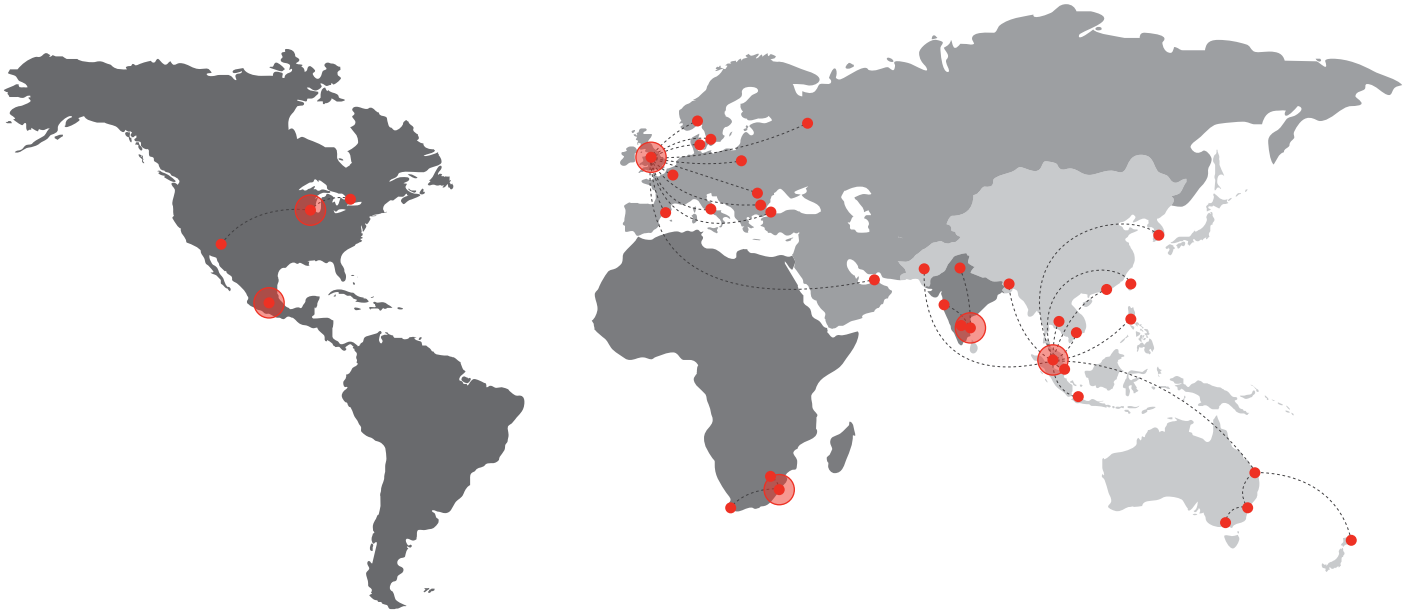
**PHYTOMILLESIME**  
PRECIOUS CARE  
SERUM FOR  
COLOR-TREATED,  
HIGHLIGHTED HAIR

**SENSIA**  
BEAUTY  
FOR  
DARK, RED HAIR



**PHYTOELIXIR**  
REPLENISH & PROTECT  
ULTRA-DRY HAIR





## Flowcrete

World leader in seamless resin flooring solutions and other specialist coatings.

### Africa

South Africa +27 31 701 0017 southafrica@flowcrete.com

### Asia Pacific (APAC)

|             |                  |                           |
|-------------|------------------|---------------------------|
| Australia   | +61 7 3205 7115  | australia@flowcrete.com   |
| Bangladesh  | +603 6277 9575   | bangladesh@flowcrete.com  |
| Hong Kong   | +852 2795 0478   | hongkong@flowcrete.com    |
| Indonesia   | +62 21 252 3201  | indonesia@flowcrete.com   |
| Korea       | +60 3 6277 9575  | korea@flowcrete.com       |
| Malaysia    | +60 3 6277 9575  | asia@flowcrete.com        |
| New Zealand | +64 7 541 1221   | newzealand@flowcrete.com  |
| Pakistan    | +60 3 6277 9575  | pakistan@flowcrete.com    |
| Philippines | +63 2 834 6506   | philippines@flowcrete.com |
| Singapore   | +65 6848 7166    | singapore@flowcrete.com   |
| Taiwan      | +60 3 6277 9575  | taiwan@flowcrete.com      |
| Thailand    | +66 2539 3424    | thailand@flowcrete.com    |
| Vietnam     | +84 28 6287 0846 | vietnam@flowcrete.com     |

## Europe & Middle East (EME)

|          |                      |                        |
|----------|----------------------|------------------------|
| Bulgaria | +359 898 61 58 31    | bulgaria@flowcrete.com |
| Denmark  | +46 435 40 01 10     | denmark@flowcrete.com  |
| France   | +33 1 60 61 74 42    | france@flowcrete.com   |
| Italy    | +39 339 4853258      | italy@flowcrete.com    |
| Norway   | +47 6486 0830        | norway@flowcrete.com   |
| Poland   | +48 22 879 8907      | poland@flowcrete.com   |
| Romania  | +40 766 596 991      | romania@flowcrete.com  |
| Russia   | +7 916 931 3513      | russia@flowcrete.com   |
| Spain    | +34 937 07 0872      | spain@flowcrete.com    |
| Sweden   | +46 435 40 01 10     | sweden@flowcrete.com   |
| Turkey   | +90 212 2946570      | turkey@flowcrete.com   |
| UAE      | +971 4 347 0460      | uae@flowcrete.com      |
| UK       | +44 (0) 1270 753 000 | uk@flowcrete.com       |

### India

India +91 44 40176600 india@flowcrete.com

## North America

|        |                 |                        |
|--------|-----------------|------------------------|
| Canada | +1 877-210-2444 | canada@flowcrete.com   |
| Mexico | +55 44 40 94 00 | mexico@flowcrete.com   |
| USA    | +1 513-943-4225 | americas@flowcrete.com |

\*Whilst every care has been taken to ensure that the information included in this document was accurate at the time of printing, Flowcrete reserves the right to change product specifications at any time without prior notice. The photographs and colours reproduced in this publication are within the constraints of the printing process and are not to be used for matching purposes. All photographs are used for approximate representation only and may not show the actual products on offer. E&OE.